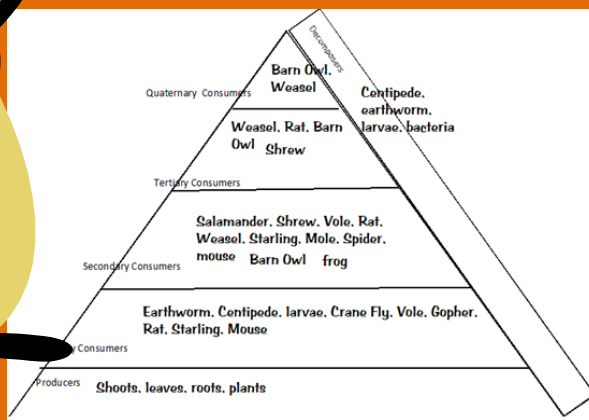


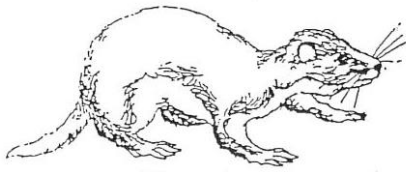
# Create a Barn Owl Food Web & Pyramid



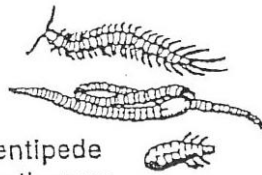
Name \_\_\_\_\_

Glue your   food web here. **Make sure to include the arrows showing energy transfer!**

# Food Web Animals



Weasel



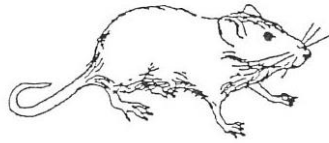
Centipede  
Earthworm  
Larva



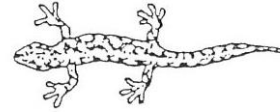
Pocket Gopher



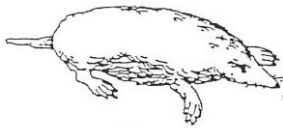
Vole



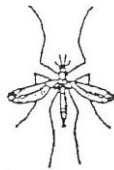
Rat



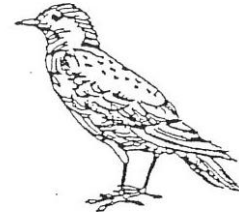
Salamander



Mole



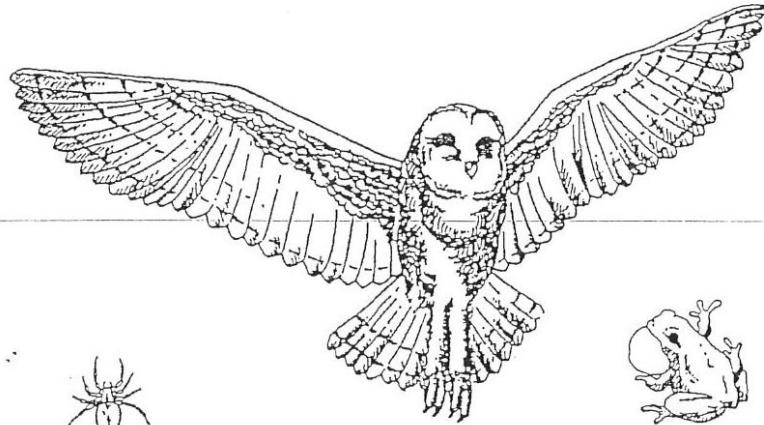
Crane Fly



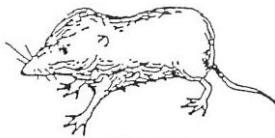
Starling



House Mouse



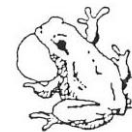
Barn Owl



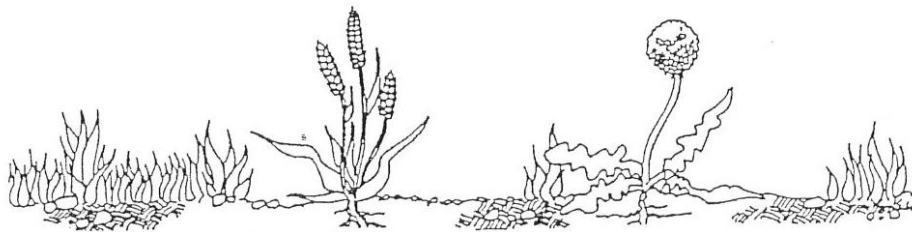
Shrew



Spider



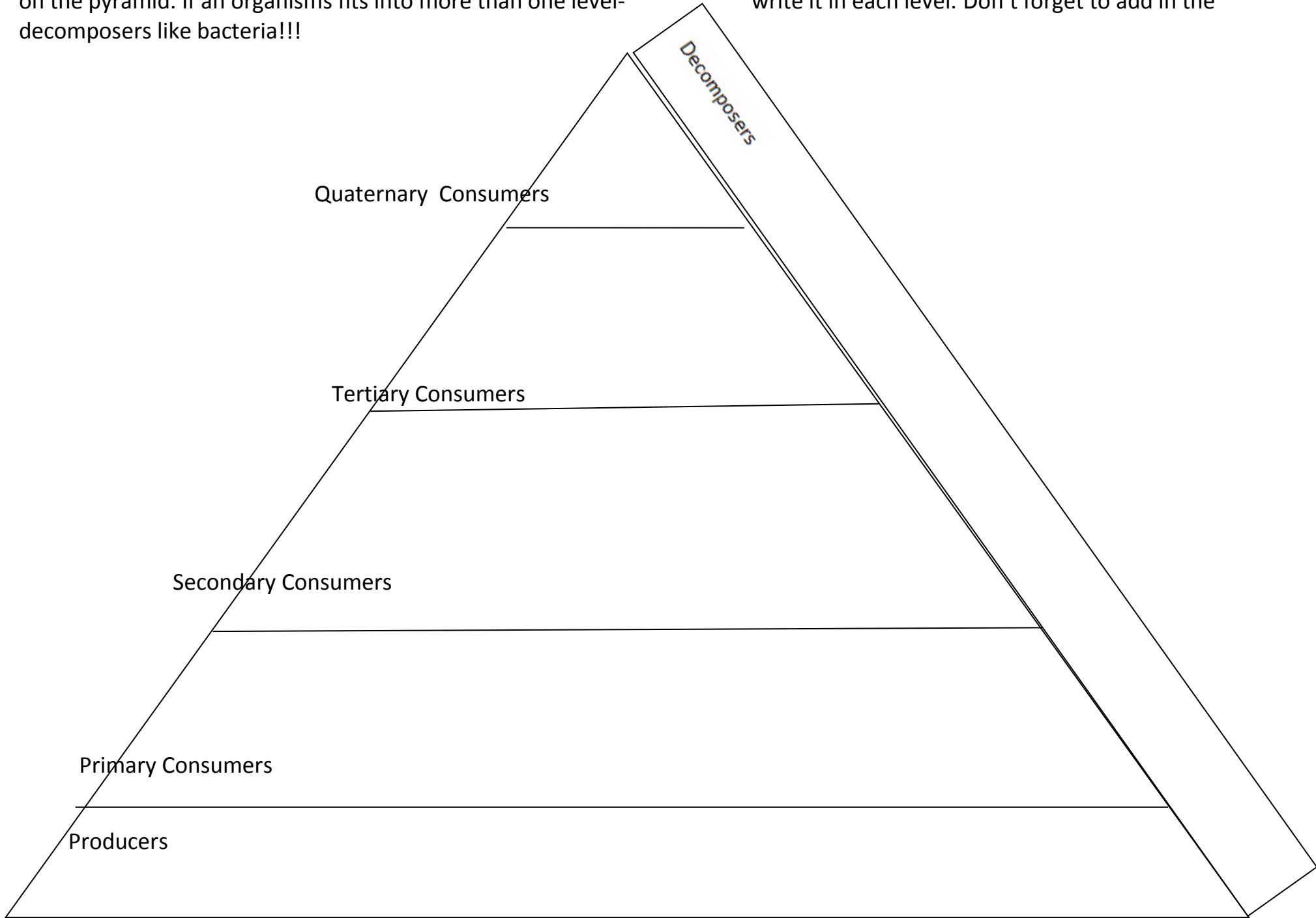
Frog



Shoots Seeds Roots Plants



**Food Pyramid-** Write the names of the organisms in the Barn Owl food web in the correct locations on the pyramid. If an organisms fits into more than one level- write it in each level. Don't forget to add in the decomposers like bacteria!!!





# Food Web Cheat Sheet!

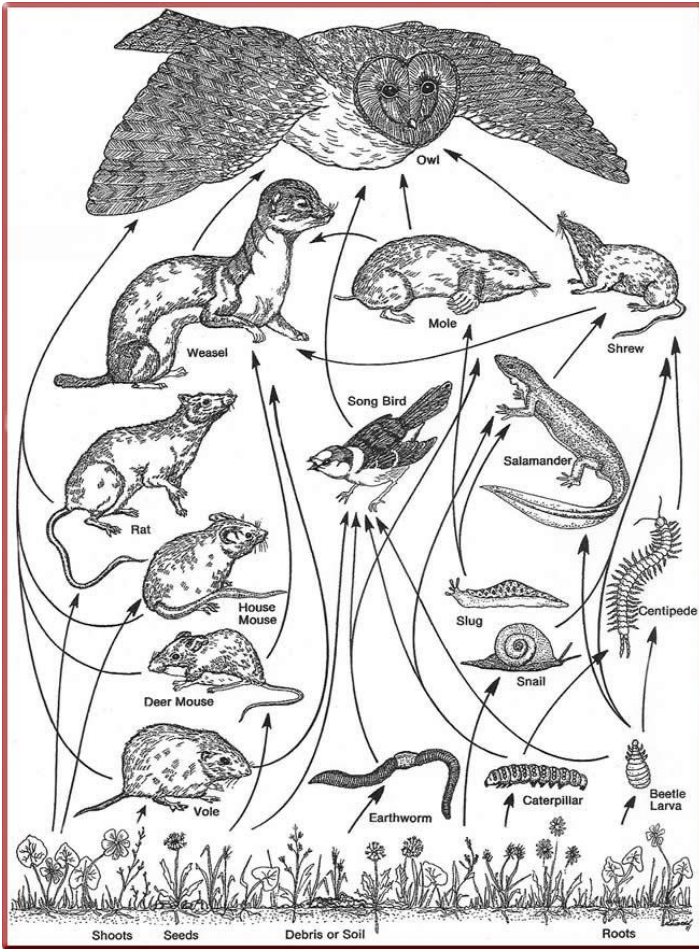
ORGANISM	WHAT IT EATS	WHAT EATS IT (predators)
Earthworm/ centipede/ larvae	Dead organism, vegetation (and turns them into soil nutrients)	Shrew, Mouse, Mole
Frog	Larvae, insects, worms	Shrews, Mice, snakes, fish, etc.
Salamander	Larvae, insects, worms	Shrews, snakes, fish, etc.
Crane fly	Vegetation/ nectar	Starling
Vole	roots, leaves, seeds, grasses, insects	Barn Owls, weasel
Gopher	roots, leaves, seeds, grasses	Barn Owls, weasel
Rat	roots, leaves, seeds, grasses, small rodents	Barn Owls, weasel
Weasel	Birds, Shrew, rat, gophers, moles, Mice, frog, salamander	Barn Owl
Shrew	Larvae, insects, worms,	Barn Owls, weasel
Starling	Crane Fly, seeds	Barn Owls, weasel
Mole	Larvae, insects, worms	Barn Owls, weasel
Spider	Dead organisms, mosquitoes	Mole, shrew, mouse, frog, salamander
Mouse	roots, leaves, seeds, grasses, earthworms, insects, larvae	Barn Owls, weasel
Barn Owl	Mice, shrew, mole, weasel, gopher, vole, rat	Once dead, earthworms, larvae, etc decompose the owl



# Food Web Cheat Sheet!

ORGANISM	WHAT IT EATS	WHAT EATS IT (predators)
Earthworm/ centipede/ larvae	Dead organism, vegetation (and turns them into soil nutrients)	Shrew, Mouse, Mole
Frog	Larvae, insects, worms	Shrews, Mice, snakes, fish, etc.
Salamander	Larvae, insects, worms	Shrews, snakes, fish, etc.
Crane fly	Vegetation/ nectar	Starling
Vole	roots, leaves, seeds, grasses, insects	Barn Owls, weasel
Gopher	roots, leaves, seeds, grasses	Barn Owls, weasel
Rat	roots, leaves, seeds, grasses, small rodents	Barn Owls, weasel
Weasel	Birds, Shrew, rat, gophers, moles, Mice, frog, salamander	Barn Owl
Shrew	Larvae, insects, worms,	Barn Owls, weasel
Starling	Crane Fly, seeds	Barn Owls, weasel
Mole	Larvae, insects, worms	Barn Owls, weasel
Spider	Dead organisms, mosquitoes	Mole, shrew, mouse, frog, salamander
Mouse	roots, leaves, seeds, grasses, earthworms, insects, larvae	Barn Owls, weasel
Barn Owl	Mice, shrew, mole, weasel, gopher, vole, rat	Once dead, earthworms, larvae, etc decompose the owl

POSSIBLE ANSWERS:



**Food Pyramid**- Write the names of the organisms in the Barn Owl food web in the correct locations on the pyramid. If an organism fits into more than one level- write it in each level. Don't forget to add in the decomposers like bacteria!!!

